



FIONA ELSEY
CANCER RESEARCH INSTITUTE
fighting cancer through research

2016 ANNUAL REPORT



**FIGHTING CANCER
THROUGH RESEARCH**



Advancing the understanding and treatment of cancer by making an internationally recognised contribution to cancer research.



A Story of Inspiration

The inspiration for a regional Victorian cancer research facility came from a young cancer patient, Fiona Elsey, who planted a seed in the minds of her oncologist, her family and her local community. From Fiona's dream a garden of hope has grown in the form of an internationally recognised research Institute in Ballarat.

Fiona grew up in the heart of regional Victoria and attended Ballarat High School, until she was diagnosed with Ewing's sarcoma (a rare form of bone cancer) at the age of 13 in 1990. While on her regular trips to Melbourne for treatment, she would often discuss with her then pediatric oncologist, George Kannourakis, why cancer research only occurred in capital cities. During these long days of treatment, Fiona and George planned how to make her dream of a regional research centre a reality.

Fiona lost her fight for life in 1991, but she inspired all those around her, including her local community, which raised the funds to support the establishment of the Cancer Research Centre. In 1998, the Fiona Elsey Cancer Research Laboratory, named in Fiona's memory, was officially opened. Today, having relocated to the Ballarat Technology Park within Federation University Australia's campus, the Institute is the leading research facility in regional Australia.

Vision

Through world-class research, we aim to bring hope to those touched by cancer.

Mission

To advance the understanding and treatment of cancer by making an internationally recognised contribution to cancer research.

Help us Fight Cancer Through Research

Everyone will be touched by cancer in some way. Cancer is a disease of many types and the statistics that exist around this disease are sobering. We know that 1 in 3 women and 1 in 2 men will develop a form of cancer before age 85. When writing your next will, we invite you to please consider including a bequest to the Fiona Elsey Cancer Research Institute. Please contact us for a confidential meeting to discuss this investment in our collective future.



Prof George Kannourakis
MBBS, B(Med)Sci, PhD, FRACP
Honorary Director of Research

TABLE OF CONTENTS

06	Message from Our Chair
07	Message from our Honorary Research Director
10	Our Board of Directors
11	Our Staff
13	Our Research
14	Our Publications
16	Our Events
19	Our Financials
22	Fiona's Dream



Message from Our Chair

The Fiona Elsey Cancer Research Institute has embarked on the next chapter of its development. It is just 18 months since the Institute moved from its original home on the grounds of St John of God Hospital, to its new purpose-built laboratories on Federation University's SMB Campus.

The move to our state-of-the-art laboratories reflects the continuous growth of the Institute, from very humble beginnings 20 years ago, to a clearly well-regarded Institute whose scientific research is now beginning to bear fruit.

The last decade has seen the expansion of the Institute's research effort, a very pleasing increase in the number of scientific staff and students and the formation and consolidation of a governance structure whose primary aim to ensure that the Institute's major goal of carrying out high quality research into the further understanding, prevention and cure of cancer is fulfilled.

The membership of the Institute's Board of Management is drawn from community leaders who bring wide-ranging expertise in governance, fundraising, financial matters, science and human resources to the Board. Their continued dedication to the proper governance of the Institute is gratefully acknowledged. This ensures that the Institute is well served to provide the communities of Ballarat and western Victoria with the confidence that their most generous support is put to best use.

It is noteworthy, that the Institute is wholly dependent on funds donated through the remarkable generosity of the Institute's community of donors. It is from their ongoing support that this most critical research into cancer can continue. The Board also is most appreciative of the outstanding work of the scientific research, administrative and fundraising staff. Without their wonderful dedication, insight and expertise, the achievements seen so far would not have been possible.

The Board also extends a special note of gratitude and admiration to the Honorary Research Director, Professor George Kannourakis, who, in many ways, provides the stimulus for us all to continue to contribute to the Institute's overarching vision and goals.

The future of the Institute, as one of the few truly regional cancer research institutes, is both bright and enduring.



Emeritus Professor Wayne Robinson
BVSc, MVSc, PhD, MACVSc, DACVP
Chair, Board of Management

Message from Our Honorary Research Director



Prof George Kannourakis MBBS, B(Med)Sci, PhD,
FRACP Honorary Director of Research

The last twelve months have been productive in the Institute, with further presentations from our scientific staff at national and international meetings and new scientific publications.

Dorevitch Pathology have continued their support for Associate Professor Stuart Berzins position, funded in partnership by the Institute and Federation University. Additionally, funding has been secured for Professor Nuzhat Ahmed for a further year from private donors. I am very hopeful that Nuzhat and Stuart will be successful in obtaining research grants that will offset or support their research/salaries in the foreseeable future.

The Annual Ballarat Cycle Classic event in February is the Institute's largest fundraising event and continues to be successful. Additionally, Federation University has agreed to fund our PhD student program, providing approximately \$60,000.00 per year to the Institute.

We have published a number of scientific articles in high profile international journals that continue to raise the scientific profile of the Institute. Clinical trials requiring involvement of our laboratory staff has also led to further publications in highly regarded clinical journals. Major accomplishments have been the discovery of a novel

subset of T cells in Langerhans Cell Histiocytosis (LCH) lesions, as well as the publication of a new method to identify novel viruses, both of which have generated a lot of international interest. Because of the publication of our viral work, we were asked to write a review article in the British Journal of Virology, with Dr Monirul Islam as the first author.

Associate Professor Stuart Berzins continues to expand his research into immune cells since starting at the Institute in 2012. He is an internationally recognized expert in NKT and MAIT cells and his group is very active in studying both haematological and solid malignancies. Stuart continues to supervise five PhD students and continues with collaborative research with many research groups.

With new developments in the treatment of lung cancer particularly immunotherapy, accrual to the chemo sensitivity lung cancer trial has slowed. It means that many new patients are treated with immunotherapy rather than chemotherapy. We hope to analyse the results of the trial to date, and publish an interim analysis in the near future.

Adjunct Professor Nuzhat Ahmed has continued her work in ovarian cancer in collaboration with groups at MIMR and Epworth Hospital. She has developed a research program studying ovarian cancer stem cells and their interactions with immune cells. She is currently supervising two PhD students from Federation University.

Staff of the Institute have presented our research at 16 National and International meetings in the last year. Associate Professor Stuart Berzins, Professor Nuzhat Ahmed and myself have been invited speakers at a number of international meetings. I have had meetings and laboratory visits to the Albert Einstein University in New York in December 2015 and the Karolinska Institute in Stockholm in June 2016 with Professor Jan-Inge Henter. I have visited Professor Dale Godfrey at the Doherty

Institute to initiate a collaboration to further our research into Histiocytosis. I am currently supervising PhD candidate, Jenée Mitchell in the LCH project, with co-supervisors Associate Professor Stuart Berzins and Daniel Pellici.

Our monthly seminar program continues to be well attended by Federation University staff and students, allowing our ties to be further strengthened with the Institution.

The Institute continues to be well placed to undertake leading cutting-edge research in the role of immune cells in cancer development.

Prof George Kannourakis MBBS, B(Med)Sci, PhD, FRACP
Honorary Director of Research





Our Board



Emeritus Professor
WAYNE ROBINSON
BVSc, MVSc, PhD, MACVSc, DACVP

Chair of the Board
Board member since: 2004



DAVID FISK
BAGSc, MBA

Deputy Chair of the Board
Board member since: 2004



Professor
GEORGE KANNOURAKIS
MBBS, B(Med)Sci, PhD, FRACP

Honorary Director of Research
Board member since: 2004



ROB GLASS
BEc DipAgSci FCA

Treasurer
Board member since: 2005



PAULA NICHOLSON
BSc

Board member
Board member since: 2009



TIM BODEY
BCom, CA

Board member
Board member since: 2013



LISA HAYDEN
BAppSci (Speech Path)

Board member
Board member since: 2013



GRAEME DIXON
BBus

Board member
Board member since: 2013



KERRY SHADE
AFAIM, FLGP, PSM

Board member
Board member since: 2014



Professor
LEIGH SULLIVAN
BScAgr (Hons) PhD, CPSS MAICD

Board member
Board member since: March 2016



JASON PRIESTLY

Board member
Board member since: April 2016

Our Staff

Honorary Director of Research Prof George Kannourakis

MBBS B(Med)Sci PhD FRACP

RESEARCH STAFF

Assoc Prof Stuart Berzins *BSc (Hons) PhD GCUT*

Prof Nuzhat Ahmed *BSc (Hons) MSc PhD*

Dr Monirul Islam *BSc (Hons) MSc PhD*

Dr Jenny West *BSc (Hons) PhD*

Dr Sharon Olsen *BSc (Hons) PhD*

Brendan Toohey *BSc*

Megan Earls *BBiomedSc (Hons)*

Dr Morgan Wallace *BSc (Hons) PhD (Visiting Research Fellow)*

DEVELOPMENT STAFF

Carol Grills *EA to Prof Director, Administration & HR Manager*

David McMahon *Fundraising & Communications Manager*

Nicole Bartlett *Cycle Classic Executive Officer*

Talitha Prendergast *Fundraising & Communication Officer*

RESEARCH STUDENTS

Marice Alcantara *BBiomedSc (Hons) - PhD Candidate*

Jason Kelly *BAppSc BBiomedSc (Hons) - PhD Candidate*

Tobias Meredith *BBiomedSc (Hons) - PhD Candidate*

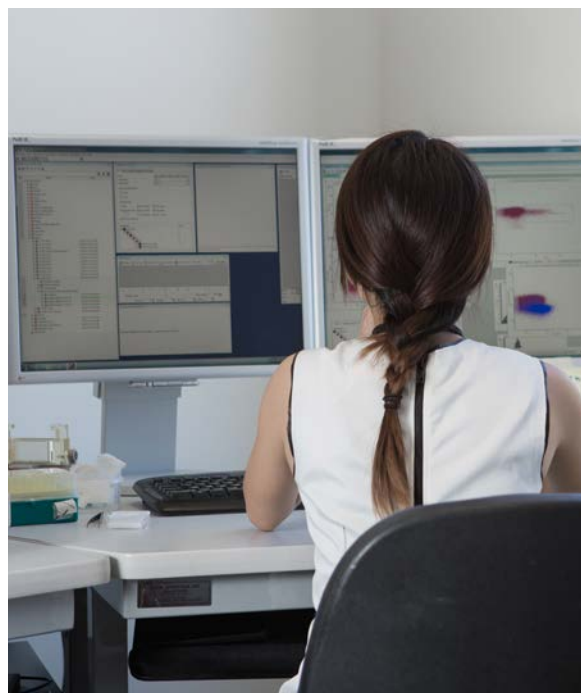
Jenee Mitchell *BAppSc (Hons) - PhD Candidate*

Yosuke Minoda *BBiomedSc (Hons) - PhD Candidate*

Tamekha Develyn *BBiomedSc - Honours Candidate*

Tamsin Wesley *BBiomedSc (Msc) - PhD Candidate*

Farah Ahmady *BBiomedSc (Hons) - PhD Candidate*





Our Research

Langerhans Cell Histiocytosis (LCH) is a disorder of immune cells affecting both children and adults. We have collected many samples from patients with LCH over many years and have discovered a novel T cell subset (CD3+CD1a+ cells) within these lesions. We have expanded these studies in collaboration with Professor Dale Godfrey (Melbourne University) to further understand the role of these cells in the pathogenesis of LCH, and with Professor Peter Moore (University California at Davis, USA) to examine the role of these cells in canines.

Chemo sensitivity Lung Cancer Trial will be analysed as an interim analysis and a decision regarding further patient accrual will be made after this review. This trial will determine whether there is a role for pre-testing tumour samples in the laboratory prior to treating patients with chemotherapy drugs.

Chronic Lymphocytic Leukaemia (CLL) project will study the role of immune cells in the regulation of disease progression (in collaboration with Associate Professor Berzins and Dr Morgan Wallace) as well as studying the genetic mutations (Dr Monirul Islam) that occur over a long period of time. The Institute is in a unique position to study over one hundred patients with sequential blood samples. Preliminary data have demonstrated interesting results in the analysis of immune cells in

these patients. This work has the potential of identifying new immune checkpoints that may lead to future immune treatments for leukaemias and other cancers.

Studies on the immunology of cancer and the role of T cell subsets, NKT cells, MAIT (mucosal associated invariant T) cells and gamma-delta T cells in various cancers will continue and expand under the leadership of Associate Prof Stuart Berzins. It is hypothesized that defects in the immune system may predispose to cancer, or allow it to progress, and that treatments that enhance immunity may provide new treatments against cancer. Our study has identified significant abnormalities in immune cells in various cancers, which may lead to new approaches in treatment in the future.

Professor Nuzhat Ahmed will study ovarian cancer and will collaborate with Associate Prof Stuart Berzins group to study immune cells and their role in the progression of this cancer. The ovarian cancer group is growing with the addition of 2 new PhD students.

Prof George Kannourakis
MBBS, B(Med)Sci, PhD, FRACP
Honorary Director of Research



Our Research Publications

Collaboration of Epithelial Mesenchymal Transition and Cancer Stem Cells: Sinister Routes for Chemoresistant Recurrent Ovarian Cancer.

N. Ahmed, K. Abubaker, E. Chan, **G. Kannourakis**, J.K. Findlay. ADVANCES IN CANCER DRUG TARGETS, Volume 3 (electronic book chapter, in press).

Suppression subtractive hybridization method for the identification of a new strain of murine hepatitis virus from xenografted SCID mice.

Islam MM, **Toohy B**, Purcell DF, **Kannourakis G**. Arch Virol. 2015 Dec;160(12):2945-55. doi: 10.1007/s00705-015-2592-y. Epub 2015 Sep 8.

A critical role of Oct4A in mediating metastasis and disease-free survival in a mouse model of ovarian cancer.

Samardzija C, Luwor RB, Volchek M, Quinn MA, Findlay JK, **Ahmed N**. Mol Cancer. 2015 Aug 11;14:152. doi: 10.1186/s12943-015-0417-y.

An emerging role for immune regulatory subsets in chronic lymphocytic leukaemia.

Wallace ME, **Alcantara MB**, **Minoda Y**, **Kannourakis G**, **Berzins SP**. Int Immunopharmacol. 2015 Apr 7. pii: S1567-5769(15)00149-6. doi: 10.1016/j.intimp.2015.03.047.

EVERSUN: a phase 2 trial of alternating sunitinib and everolimus as first-line therapy for advanced renal cell carcinoma.

Davis ID, Long A, Yip S, Espinoza D, Thompson JF, Kichenadasse G, Harrison M, Lowenthal RM, Pavlakis N, Azad A, **Kannourakis G**, Steer C, Goldstein D, Shapiro J, Harvie R, Jovanovic L, Hudson AL, Nelson CC, Stockler MR, Martin A. Ann Oncol. 2015 Jun;26(6):1118-23. doi: 10.1093/annonc/mdv078. Epub 2015 Feb 20.

Polyclonal T-cells express CD1a in Langerhans cell histiocytosis (LCH) lesions.

West JA, **Olsen SL**, **Mitchell JM**, **Priddle RE**, **Luke JM**, Akefeldt SO, Henter JI, Turville C, **Kannourakis G**. PLoS One. 2014 Oct 24;9(10):e109586. doi: 10.1371/journal.pone.0109586. eCollection 2014.

Axitinib versus sorafenib in advanced renal cell carcinoma: subanalyses by prior therapy from a randomised phase III trial.

Escudier B, Michaelson MD, Motzer RJ, Hutson TE, Clark JI, Lim HY, Porfiri E, Zalewski P, **Kannourakis G**, Staehler M, Tarazi J, Rosbrook B, Cisar L, Hariharan S, Kim S, Rini BI. Br J Cancer. 2014 Jun 10;110(12):2821-8. doi: 10.1038/bjc.2014.244. Epub 2014 May 13.

Natural killer T cells: drivers or passengers in preventing human disease?

Berzins SP, Ritchie DS. Nat Rev Immunol. 2014 Sep;14(9):640-6. doi: 10.1038/nri3725. Epub 2014 Aug 8.

The glucocorticoid receptor 1A3 promoter correlates with high sensitivity to glucocorticoid-induced apoptosis in human lymphocytes.

Liddicoat DR, Kyparissoudis K, **Berzins SP**, Cole TJ, Godfrey DI. Immunol Cell Biol. 2014 Nov;92(10):825-36. doi: 10.1038/icb.2014.57. Epub 2014 Jul 22.

Acute exercise leads to regulation of telomere-associated genes and microRNA expression in immune cells.

Chilton WL, Marques FZ, **West J**, **Kannourakis G**, **Berzins SP**, O'Brien BJ, Charchar FJ. PLoS One. 2014 Apr 21;9(4):e92088. doi: 10.1371/journal.pone.0092088. eCollection 2014.

Neoadjuvant chemotherapy with sequential anthracycline-docetaxel with gemcitabine for large operable or locally advanced breast cancer: ANZ 0502 (NeoGem).

McCarthy N, Boyle F, Zdenkowski N, Bull J, Leong E, Simpson A, **Kannourakis G**, Francis PA, Chirgwin J, Abdi E, Gebiski V, Veillard AS, Zannino D, Wilcken N, Reaby L, Lindsay DF, Badger HD, Forbes JF; Australia and New Zealand Breast Cancer Trials Group. Breast. 2014 Apr;23(2):142-51. doi: 10.1016/j.breast.2013.12.001. Epub 2014 Jan 3.

Natural killer T cell defects in multiple myeloma and the impact of lenalidomide therapy.

Chan AC, Neeson P, Leeansyah E, Tainton K, Quach H, Prince HM, Harrison SJ, Godfrey DI, Ritchie D, **Berzins SP**. Clin Exp Immunol. 2014 Jan;175(1):49-58. doi: 10.1111/cei.12196.

Our Research Publications

Islam MM, **Toohey B**, Purcell DF, **Kannourakis G**.

Suppression subtractive hybridization method for the identification of a new strain of murine hepatitis virus from xenografted SCID mice. Arch Virol. 2015 Sep 8. [Epub ahead of print]

Elliott TR, Symes T, **Kannourakis G**, Angus P. Resolution of norfloxacin-induced acute liver failure after N-acetylcysteine therapy: further support for the use of NAC in drug-induced ALF? BMJ Case Rep. 2016 Jan 6;2016. pii: bcr2015213189. doi: 10.1136/bcr-2015-213189.

Zdenkowski N, Forbes JF, Boyle FM, **Kannourakis G**, Gill PG, Bayliss E, Saunders C, Della-Fiorentina S, Kling N, Campbell I, Mann GB, Coates AS, Gebiski V, Davies L, Thornton R, Reaby L, Cuzick J, Green M; Observation versus late reintroduction of letrozole as adjuvant endocrine therapy for hormone receptor positive breast cancer (ANZ0501 LATER): An open-label randomised controlled trial. Australia and New Zealand Breast Cancer Trials Group. Ann Oncol. 2016 Feb 9. pii: mdw055. [Epub ahead of print]

Mohammed M. Islam, Damian F. J. Purcell and **George Kannourakis**; Use of Suppression Subtractive Hybridization for Viral Diagnostics British Journal of Virology, 2016, Vol. 3, Iss. 2, Pages 41-46.

Karakiewicz PI, Nott L, Joshi A, **Kannourakis G**, Tarazi J, Alam M; Evaluation of response from axitinib per response Evaluation Criteria in Solid Tumors versus Choi criteria in previously treated patients with metastatic renal cell carcinoma. OncoTargets and Therapy 2016;9 2855-2863.

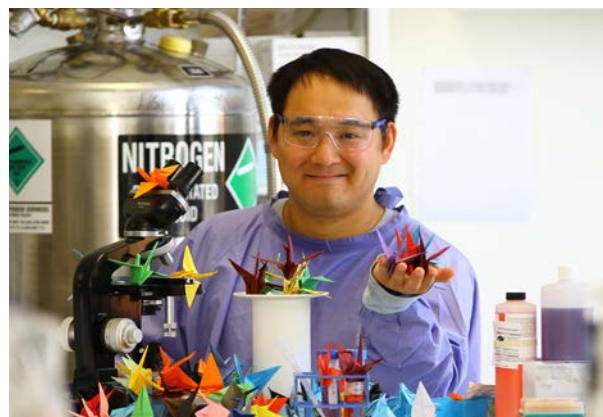
N. Ahmed, K. Abubaker, E. Chan, **G. Kannourakis**, J.K. Findlay. Collaboration of Epithelial Mesenchymal Transition and Cancer Stem Cells: Sinister Routes for Chemoresistant Recurrent Ovarian Cancer. ADVANCES IN CANCER DRUG TARGETS, Volume 3 (electronic book chapter, in press).

Fundraising & Events

Many supporters and organisations continue to conduct events and functions in our name.

These wonderful events raise much needed funds, whilst also raising awareness of the Institute's work.

- 1000 Origami Cranes Project – July 2015
- Movie Event, *The Dressmaker* – Oct 2015
- Navarre Ladies Christian Group – Oct 2015
- Salvation Army "Girls Night In" – Oct 2015
- Daffodil Day – Clunes – Oct 2015
- Labrador Indulgence Day – Nov 2015
- Springfest Dragon Boat Corporate Challenge – Nov 2015
- Springfest - Ballarat – Nov 2015
- Dansick Family Annual Shopping Tour – Nov 2015
- Vintage & Classic Car Club Rally – Jan 2016
- Chip for Charity Golf Day – Feb 2016
- Integrity Group Fitness – Ballarat – Feb 2016
- Kaniva Cancer Council – April 2016
- Vintage & Classic Car Morning Tea – May 2016
- Stuart Shaw Memorial Function – "A Brew for Stu" – Jun 2016





2016 Ballarat Cycle Classic

A magnificent total of \$157,409.00 was raised as a result of this year's ninth Ballarat Cycle Classic. This annual event has raised more than \$1.4 million for the Institute since its inception in 2008. The event saw more than 1800 cyclists and walkers take part. Due to the strong support of local businesses, 100% of all entry fees were directed to cancer research.

The event saw a variety of road and mountain bike events, as well as a superhero themed walk around Lake Wendouree. Significant media attention for the Institute was also generated by a strong radio, television and print media campaign.

Thank you to the following sponsors:

Platinum:

BJT Legal, City of Ballarat, Fulton Hogan

Naming Rights:

Cyclescape, National Australia Bank, Arthur J Gallagher, Federation University

Media Partners:

Southern Cross Austereo, The Courier, PowerFM/3BA

Silver: Crowe Horwath, Dennis Family Homes, JG King Homes, Onsite Rental, Rotary - Ballarat South

Bronze:

Natures Cargo, Lake Imaging, Dolls Cleaning, Lake Wendouree Luxury Apartments, Eureka Concrete, Ballarat Eye Clinic, Atmosphere Events, Central Highlands Water

We would also like to thank our voluntary organising committee for the tireless assistance offered to our Executive Officer Nicole Bartlett, to ensure the successful delivery of this major fundraising initiative each year.



The voice of world cycling Phil Liggett behind the Ride4Research

Young rider ready to take on the challenge of the Mountain Bike course

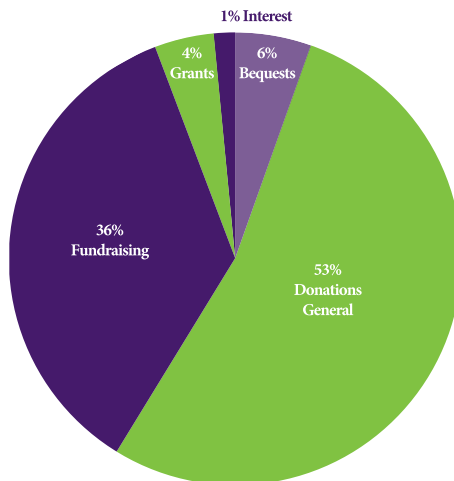
FIONA ELSEY CANCER RESEARCH INSTITUTE

FINANCIAL COMMENTARY FOR
THE YEAR ENDED 30 JUNE 2016

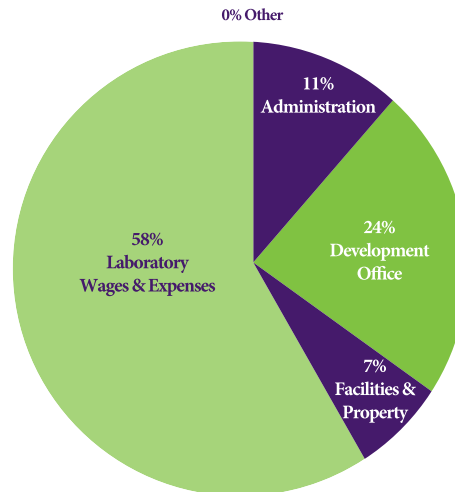


FIONA ELSEY CANCER RESEARCH INSTITUTE

Income 2016



Expenditure 2016



Graphic Presentation of Operations for the Year Ended 30 June 2015

The year ended 31 June 2016 was a challenging year financially for the Institute.

We received \$30,000 as a grant, \$257,059 in donations and bequests and a further \$244,166 from direct fundraising activities. After spending \$614,645 on laboratory operations, \$76,313 in facilities, \$53,052 on general administration expenses and \$264,473 on our development office, the Institute reported an operating loss of (\$430,182) for the year. The Institute had sufficient cash reserves to cover the operating loss for the year. Apart from the grant, no other form of government support or funding was received by the Institute.

At 30 June 2016, the financial position of the Institute has decreased somewhat, with a reduction in cash reserves and revenue. As a prudent financial measure, the Institute implemented cost reduction and new fundraising programs to set in place stability of the financial position in the future.

The Institute will continue to rely on significant community support.

For further information and details on the Institute, please visit the independent national regulator of charities, the Australian Charities and Not-for-profits Commission (ACNC) website and the following link:

<http://www.acnc.gov.au/RN52B75Q?ID=C5089532-3F19-4477-BA87-5EEDE94A46B9&noleft=1>

FIONA ELSEY CANCER RESEARCH INSTITUTE

STATEMENT OF FINANCIAL POSITION AS AT 30 JUNE 2016

	2016	2015
	\$	\$
CURRENT ASSETS		
Cash	427,647	781,174
Receivables	99,077	57,273
Other Current Assets	49,438	17,417
TOTAL CURRENT ASSETS	576,162	855,864
NON-CURRENT ASSETS		
Property, Plant and Equipment	580,994	629,662
Other Non Current Assets	8,123	7,708
TOTAL NON-CURRENT ASSETS	589,117	637,370
TOTAL ASSETS	1,165,279	1,493,234
CURRENT LIABILITIES		
Trade & Other Payables	202,863	101,092
Provisions	68,148	62,328
TOTAL CURRENT LIABILITIES	271,011	163,420
NON CURRENT LIABILITIES		
Provisions	39,595	44,960
TOTAL NON CURRENT LIABILITIES	39,595	44,960
TOTAL LIABILITIES	310,606	208,380
NET ASSETS	854,673	1,284,854
EQUITY		
Corpus	480,412	480,412
Retained Surplus	374,261	804,442
TOTAL EQUITY	854,673	1,284,854

This Statement is an extract from the audited financial statements of the Fiona Elsey Cancer Research Institute for the year ended 30 June 2016 lodged with Australian Charities & Not-for-Profit Commission (ACNC) and available for viewing on the website of the Commission.

Fiona's Dream

The Fiona Elsey Cancer Research Institute came into being from the vision of a 13-year-old girl. In 1990, Fiona was diagnosed with Ewings Sarcoma (a rare muscle cancer). She underwent chemotherapy at the Royal Children's Hospital and was treated by paediatric oncologist and haematologist Dr George Kannourakis. Ewings Sarcoma at this time had a survival rate of 5% and despite treatment, Fiona's disease progressed. She died on October 6th, 1991 aged 14.

Speaking about the death of a young child is particularly difficult. It represents every parent's worst nightmare and every doctor's most challenging situation. But in 1991, the statistics around Fiona's illness meant that the likelihood of surviving this illness was remote. What a doctor needs to do is continue trying to outwit the disease, remaining hopeful but also being practical. Fiona needed care, particularly during the final stages of her illness and George Kannourakis provided that care. Delving deeper into this situation indicates that at the most challenging time in the Elsey family's life, the relationship with Fiona's treating doctor was pivotal in caring for her and finding a way to deal with this manifest unfairness.



The relationship between doctor and patient is particularly intimate and especially when the patient is dying. George Kannourakis was instrumental in enabling Fiona to remain at home in her final weeks, by providing her with pain relief and medical care. During this time, Fiona asked George to promise her that he would become involved in research so that other people would not have to go through what she was going through. This is a remarkable insight to the bravery from a young girl battling a terminal disease.

Upon her death, George Kannourakis, Fiona's mother, Gail Elsey and a support group of Ballarat residents set about making Fiona's dream a reality, and enabling a promise to be kept.



Help us continue the fight

You can now donate online at www.fecri.org.au

☐ I would like to make the following donation to Fiona Elsey Cancer Research Institute

\$

Donations over \$2 are tax deductible and a receipt will be forwarded on request.

This donation is in memory of

.....

Title

Surname

First Name

Address

.....

Postcode

Phone

Email@.....

Please tick (cheques payable to Fiona Elsey Cancer Research Institute)

☐ Cheque ☐ Mastercard ☐ Visa

Expiry date ____ / ____

Name on Card

Signature

Please complete all sections and return the form with payment to:

Fiona Elsey Cancer Research Institute
Suite 23, 106-110 Lydiard Street South
Ballarat Victoria
Australia

☐ Please send me more information on the FECRI Bequest Program

☐ Please update my details as above





The Fiona Elsey Cancer Research Institute
Suites 23-26 | 106-110 Lydiard Street South

Ballarat Technology Park Central
PO Box 549 | BALLARAT Vic 3353

P: +61 353 313 101
E: admin@fecri.org.au
W: www.fecri.org.au

Join us in the fight at www.fecri.org.au

Affiliated Institute

